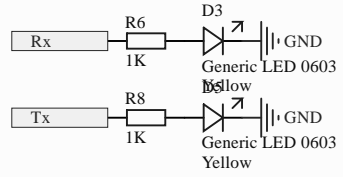
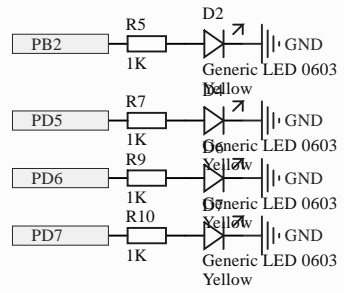
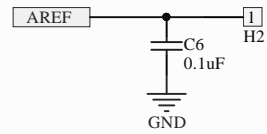
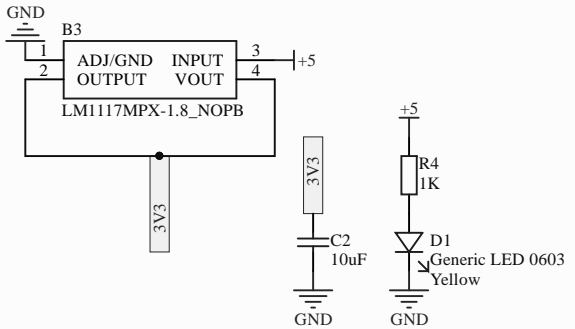
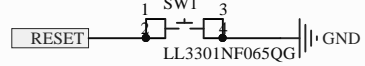
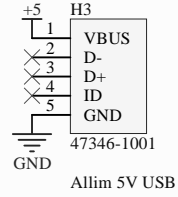
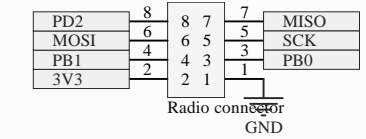
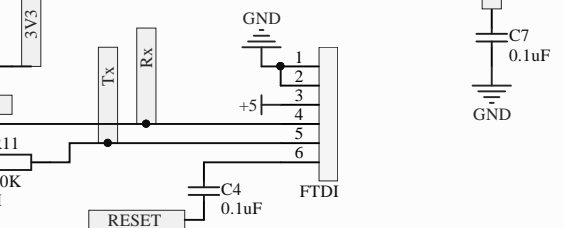
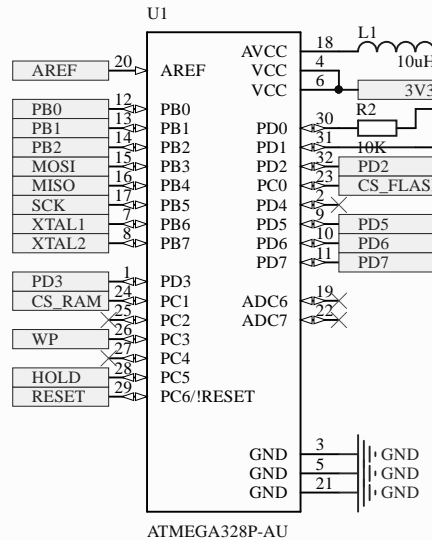
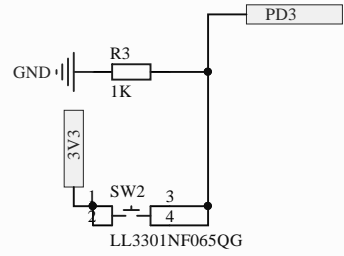
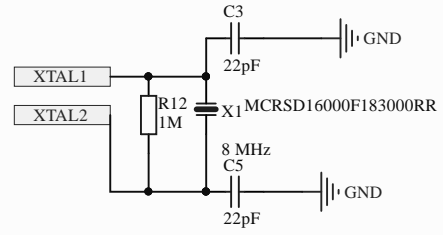
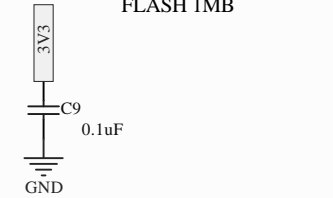
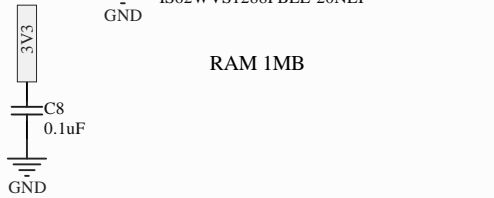


RAM 1MB

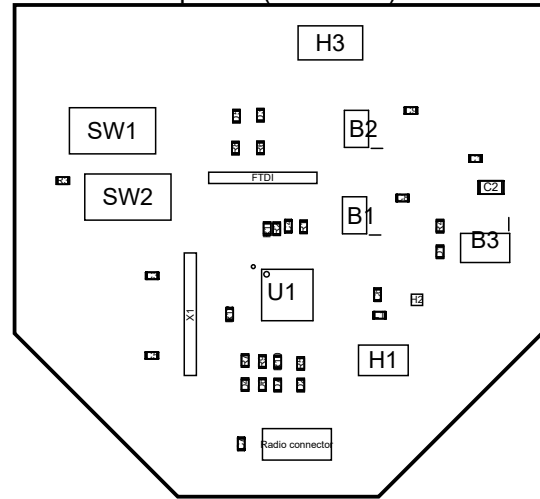
FLASH 1MB



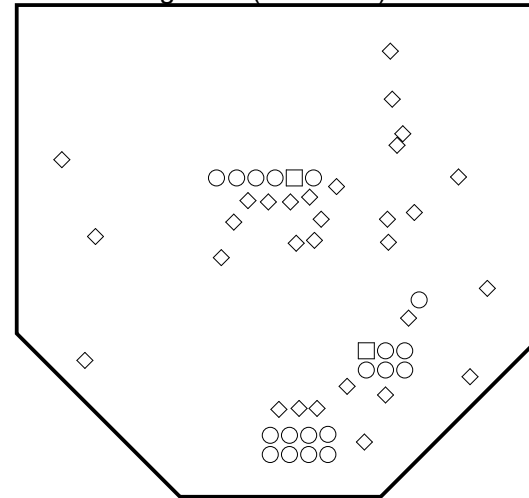
Title		
Size	Number	Revision
A4		
Date:	08/05/2019	Sheet of
File:	D:\Drive\...\Sheet1.SchDoc	Drawn By:

Comment	Description	Designator	LibRef	Quantity	Value
47346-1001	USB Connectors uUSB B Rec BotMt Flangeless SMT	H3	47346-1001	1	
ATMEGA328P-AU	Microcontroller Mcu, 8 Bit, Atmega, 20mhz, Tqfp-32	U1	ATMEGA328P-AU	1	
AVR ISP	Programmation SPI AVR microcontrollers	H1	ICSP	1	
Header1x1	Generic header 1 x 1 contacts	H2	Header1x1	1	
Header1x6	Generic header 1 x 6 contacts	FTDI	Header1x6	1	
Header2x4	Generic header 2.54 mm 2 x 4 contacts	Radio connector	Header2x4	1	
IS62WVS1288FBL-20NLI	SRAM 1Mb 128Kx8 20MHz 2.2-3.6V Serial SRAM	B1	IS62WVS1288FBL-20NLI	1	
LL3301NF065QG	ushbutton Switches 50mA 12VDC F065 4.3mm Gull Wing	SW1, SW2	LL3301NF065QG	2	
LM1117MPX-1.8_NOPB	Space saving 800-mA low-dropout linear regulator with internal current limit	B3	LM1117MPX-1.8_NOPB	1	
MCRSD16000F183000RR	QUARTZ 16MHZ 18PF HC49-US SMD	X1	MCRSD16000F183000RR	1	
W25X10CLSNIG	NOR Flash spiFlash, 1M-bit, 4Kb Uniform Sector	B2	W25X10CLSNIG	1	
CAP0603	Generic capacitor	C1, C4, C6, C7, C8, C9	CAP_0603	6	0.1uF
RES 0603	Generic resistor	R3, R4, R5, R6, R7, R8, R9, R10	RES_0603	8	1K
RES 0603	Generic resistor	R12	RES_0603	1	1M
RES 0603	Generic resistor	R1, R2, R11, R13, R14, R15	RES_0603	6	10K
CAP 1206	Generic capacitor	C2	CAP_1206	1	10uF
Inductor 0603	Default inductor	L1	IND_0603	1	10uH
CAP0603	Generic capacitor	C3, C5	CAP_0603	2	22pF
Generic LED 0603	Generic LED, 0603 package	D1, D2, D3, D4, D5, D6, D7	LED_0603	7	Yellow

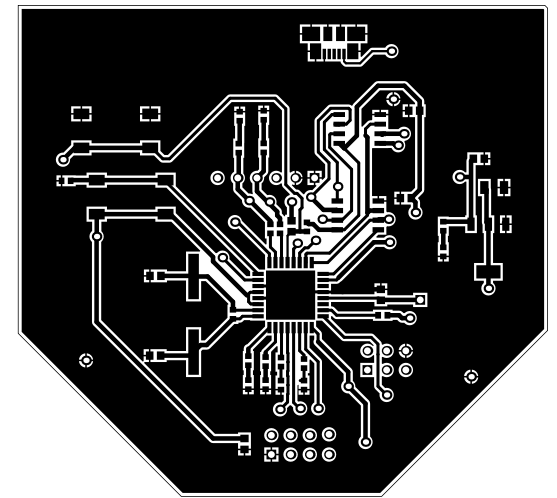
View from Top side (Scale 1:1)



Drill Drawing View (Scale 1:1)



Top Layer (Scale 1:1)



Drill Table

Symbol	Count	Hole Size	Plated	Hole Tolerance
◇	30	0.71mm	Plated	None
□	2	0.90mm	Non-Plated	None
○	19	0.90mm	Plated	None
	51 Total			

Bill Of Materials

Line #	Designator	Comment	Quantity	Value
	B1	IS62WVS1288FBLL-20NLI	1	
	B2	W25X10CLSNIG	1	
	B3	LM1117MPX-1.8_NOPB	1	
	C1, C4, C6, C7, C8, C9	CAP0603	6	0.1uF
	C2	CAP 1206	1	10uF
	C3, C5	CAP0603	2	22pF
	D1, D2, D3, D4, D5, D6, D7	Generic LED 0603	7	Yellow
	FTDI	Header1x6	1	
	H1	AVR ISP	1	
	H2	Header1x1	1	
	H3	47346-1001	1	
	L1	Inductor 0603	1	10uH
	R1, R2, R11	RES 0603	3	10K
	R3, R4, R5, R6, R7, R8, R9, R10	RES 0603	8	1K
	R12	RES 0603	1	1M
	Radio connector	Header2x4	1	
	SW1, SW2	LL3301NF065QG	2	
	U1	ATMEGA328P-AU	1	
	X1	MCRSD16000F183000RR	1	

Bottom Layer (Scale 1:1)

