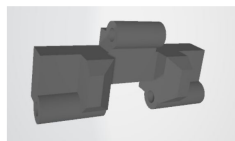
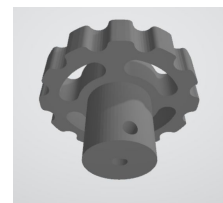


# Catalogue des pièces du Kit

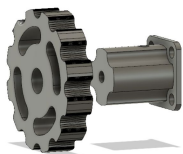
Maillon Chenille



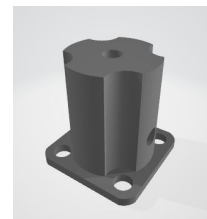
Roue moteur chenille



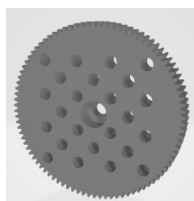
Roue libre chenille et support



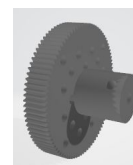
Support roue libre



Roue libre sans chenille



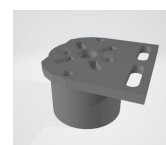
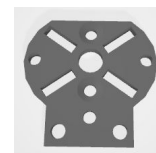
Roue moteur sans chenille



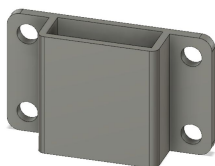
Renforcement Moteur



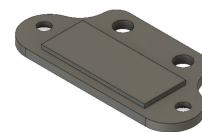
Support Moteur



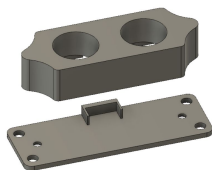
Support capteur fin de course



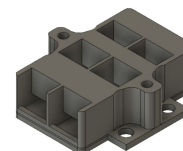
Support capteur infrarouge (Sharp)



Support capteur Ultrason



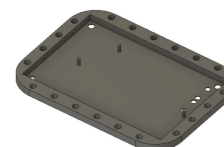
Support suiveur de ligne



Support Batteries



Support Carte Principale



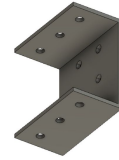
Chargeur de Batterie



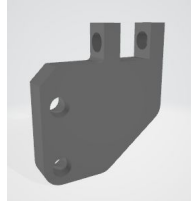
Moyeu et Tige



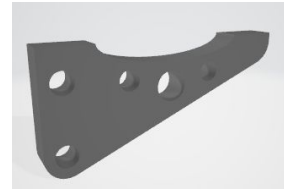
Support Bras Pince



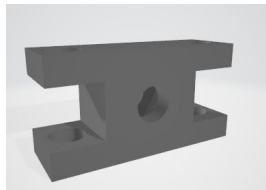
Base de la Pince



Crochet de la pince



Ecrou centrale de la pince



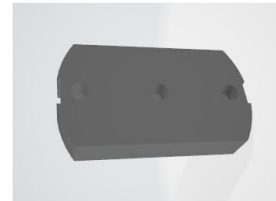
Grande liaison de la pince



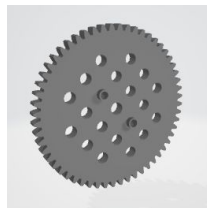
Petite liaison de la pince



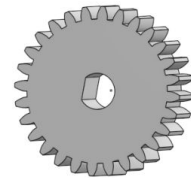
Liaison de la pince



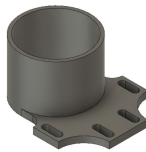
Grand Engrenage moteur Bras



Petit Engrenage moteur Bras



Support Gros Moteur DC pour le Bras



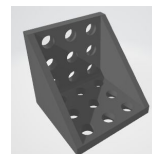
Clé Anglaise



Boîte à Vis



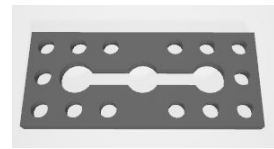
Coin 3\*3



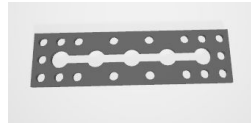
Angle 45° 12 trous



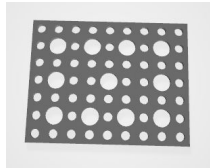
Petite Bande



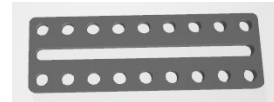
Grande Bande



Grande pièce



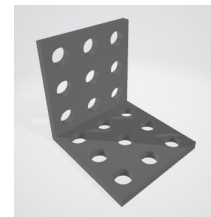
Pièce Longue



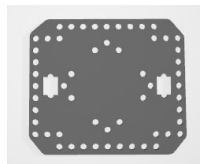
Coin 2\*4



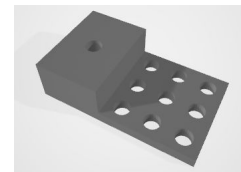
Coin 3\*3



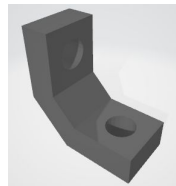
Base



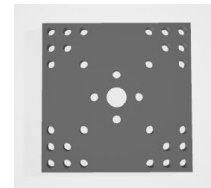
Pièce centre 3\*3



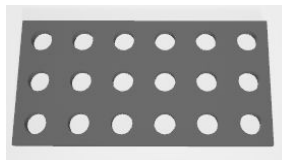
Petite pièce Coin



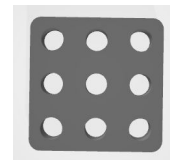
Grande pièce avec trou central



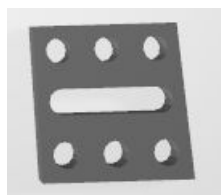
Pièce plate 6\*3



Pièce plate 3\*3



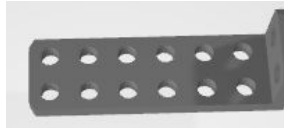
Pièce 6 trous



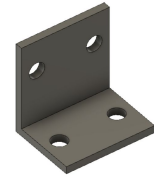
Pièce courbée 6\*2



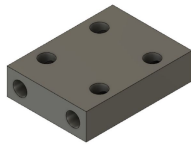
Pièce 1/2 courbée



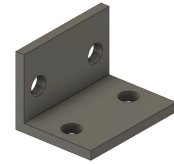
Angle 4 trous long



Pièces épaisse 2\*2



Angle 4 trous court



Pièces épaisse 4\*2



Large 192\*24mm,  
2\*12 trous



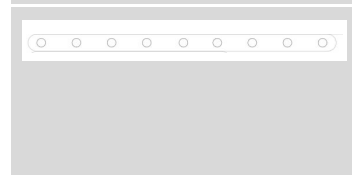
Fine  
188\*8mm,  
12 trous



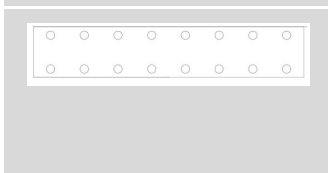
Large 176\*24mm,  
2\*11 trous



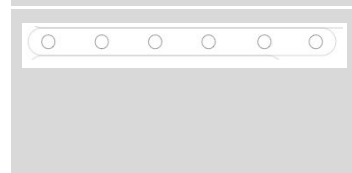
Fine  
140\*8mm, 9  
trous



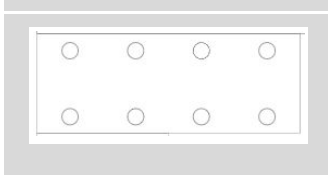
Large 128\*24mm,  
2\*8 trous



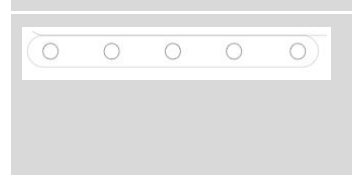
Fine  
92\*8mm, 6  
trous



Large 64\*24mm,  
2\*4 trous



Fine  
76\*8mm, 5  
trous



Large 32\*24mm,  
2\*2 trous

