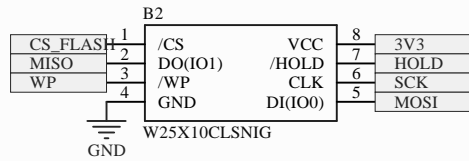
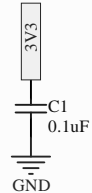
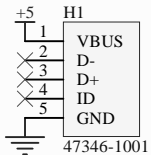
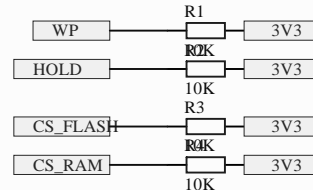
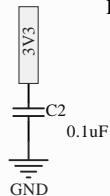


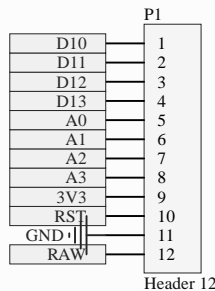
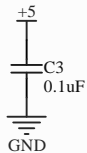
RAM 1MB



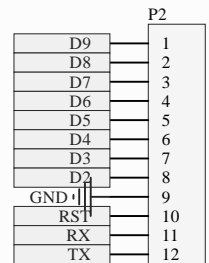
FLASH 1MB



Allim 5V USB

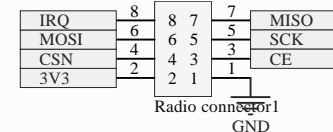


Header 12

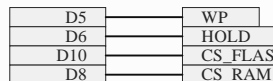
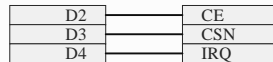
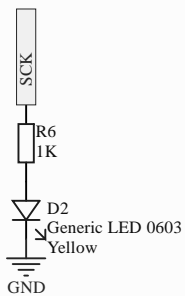
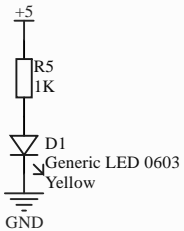
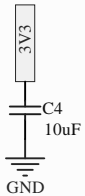
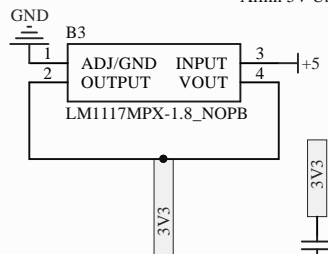


Header 12

Interface Arduino Mini



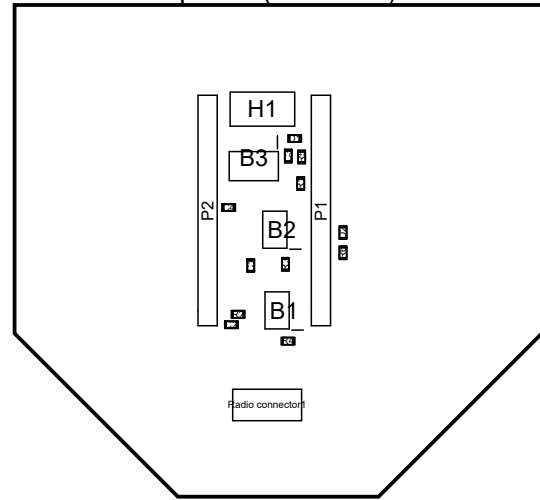
Radio connector



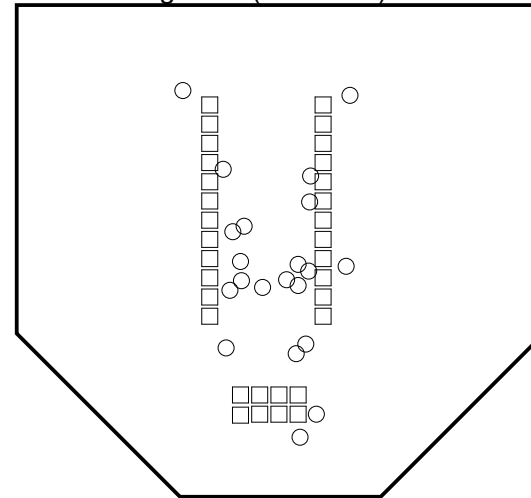
Title		
Size	Number	Revision
A4		
Date:	04/04/2019	Sheet of
File:	D:\Drive\...\Sheet1.SchDoc	Drawn By:

Comment	Description	Designator	LibRef	Quantity	Value
47346-1001	USB Connectors uUSB B Rec BotMt Flangeless SMT	H1	47346-1001	1	
Header 12	Header, 12-Pin	P1, P2	Header 12	2	
Header2x4	Generic header 2.54 mm 2 x 4 contacts	Radio connector1	Header2x4	1	
IS62WVS1288FBL-20NLI	SRAM 1Mb 128Kx8 20MHz 2.2-3.6V Serial SRAM	B1	IS62WVS1288FBL-20NLI	1	
LM1117MPX-1.8_NOPB	Space saving 800-mA low-dropout linear regulator with internal current limit	B3	LM1117MPX-1.8_NOPB	1	
W25X10CLSNI G	NOR Flash spiFlash, 1M-bit, 4Kb Uniform Sector	B2	W25X10CLSNI G	1	
CAP0603	Generic capacitor	C1, C2, C3	CAP_0603	3	0.1uF
RES 0603	Generic resistor	R5, R6	RES_0603	2	1K
RES 0603	Generic resistor	R1, R2, R3, R4	RES_0603	4	10K
CAP0603	Generic capacitor	C4	CAP_0603	1	10uF
Generic LED 0603	Generic LED, 0603 package	D1, D2	LED_0603	2	Yellow

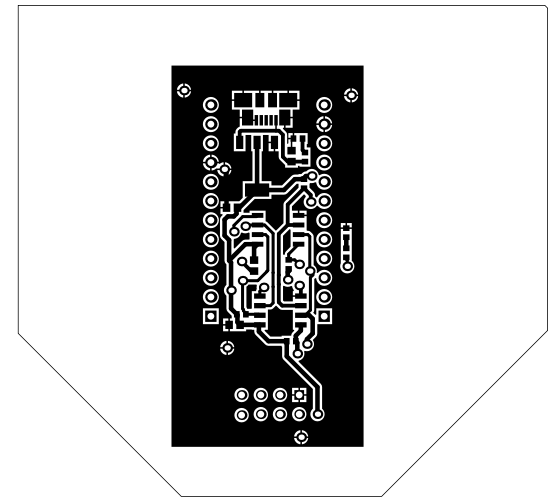
View from Top side (Scale 1:1)



Drill Drawing View (Scale 1:1)



Top Layer (Scale 1:1)



Drill Table

Symbol	Count	Hole Size	Plated	Hole Tolerance
○	21	0.71mm	Plated	None
□	32	0.90mm	Plated	None
	53 Total			

Bill Of Materials

Line #	Designator	Comment	Quantity	Value
	B1	IS62WVS1288FBLL-20NLI	1	
	B2	W25X10CLSNIG	1	
	B3	LM1117MPX-1.8_NOPB	1	
	C1, C2, C3	CAP0603	3	0.1uF
	C4	CAP0603	1	10uF
	D1, D2	Generic LED 0603	2	Yellow
	H1	47346-1001	1	
	P1, P2	Header 12	2	
	R1, R2, R3, R4	RES 0603	4	10K
	R5, R6	RES 0603	2	1K
	Radio connector1	Header2x4	1	

Bottom Layer (Scale 1:1)

