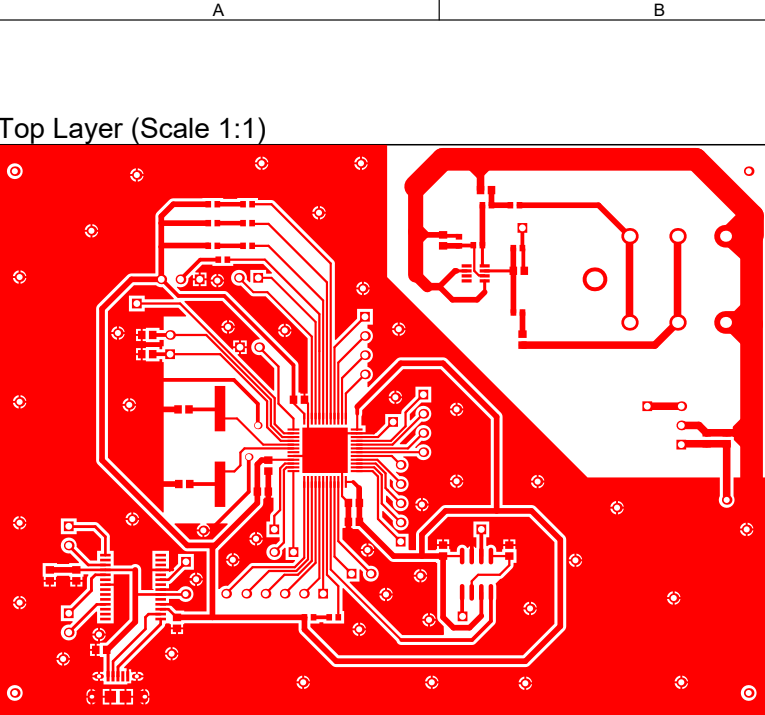
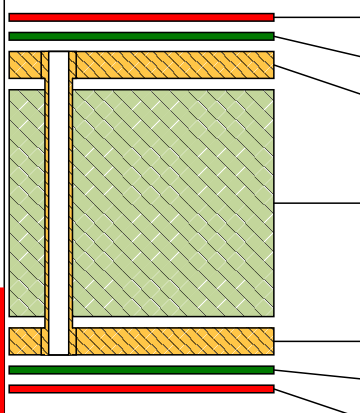


Title		
Size	Number	Revision
A2		
Date:	27/03/2019	Sheet of
File:	C:\Users\...Schematic_P73v2.SchDoc	Drawn By:

Comment	Description	Designator	Footprint	LibRef	Quantity
Header1x1	Generic header 1 x 1 c	AmpOUT, clkftdi, Filter	Header1x1L_class5L	Header1x1	8
Header1x2	Generic header 1 x 2 c	bat, H1, H3, H4, H6, H1	Header1x2L_class5L	Header1x2	7
CAP0603	Generic capacitor	C1, C2, C3, C4, C5, C6,	CAP0603M	CAP_0603	21
Generic LED 0603	Generic LED, 0603 pac	D1, D2, D3, D4	LED0603L	LED_0603	4
Header1x3	Generic header 1 x 5 c	H2, Header_Micropho	Header1x3L_class5L	Header1x3	2
Header1x6	Generic header 1 x 6 c	H5	Header1x6L_class5L	Header1x6	1
Header1x5	Generic header 1 x 5 c	H8	Header1x5L_class5L	Header1x5	1
Header1x4	Generic header 1 x 5 c	H10, Usart	Header1x4L_class5L	Header1x4	2
FT232RL-TUBE	USB-to-UART 1-CH 256	IC1	*SSOP28-LD	FT232RL-TUBE	1
AMPHENOL - ACJS-MHDR - JACK, 6.35MM		J1	ACJSMHDR	ACJS-MHDR	1
10118194-0001LF	Micro Usb, 2.0 Type b,	J2	*AMPHENOL_1011819	10118194-0001LF	1
RES 0603	Generic resistor	R1, R2, R3, R4, R5, R8,	RES0603L	RES_0603	11
STM32L433CCT6	MCU 32-Bit STM32L43	U1	*QFP50P900X900X160	STM32L433CCT6	1
MAX4468EKA-T	Audio Amp Microphor	U3	21-0078H	MAX4468EKA-T	1
MAX7401CSA+	8th-Order Switched Ca	U4	MAXM-S8+5_N	MAX7401CSA+	1
MCRSD16000F183000	QUARTZ 16MHZ 18PF	X1	HC49-US	MCRSD16000F183000	1



Layer Stack Legend

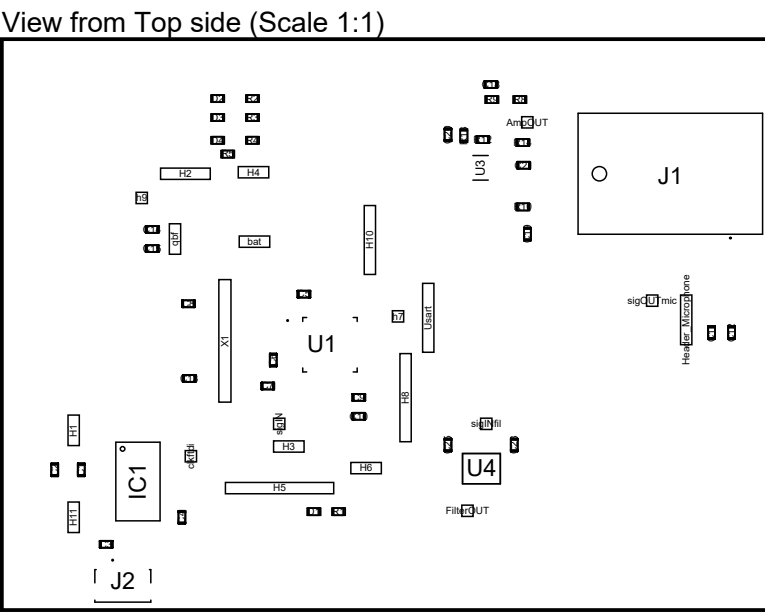


Material	Layer	Thickness	Dielectric Material	Type	Gerber
Surface Material	Top Overlay			Legend	GTO
Copper	Top Solder	0.01mm	Solder Resist	Solder Mask	GTS
	Top Layer	0.04mm		Signal	GTL
		1.60mm	FR-4	Dielectric	
Copper	Bottom Layer	0.04mm		Signal	GBL
Surface Material	Bottom Solder	0.01mm	Solder Resist	Solder Mask	GBS
	Bottom Overlay			Legend	GBO

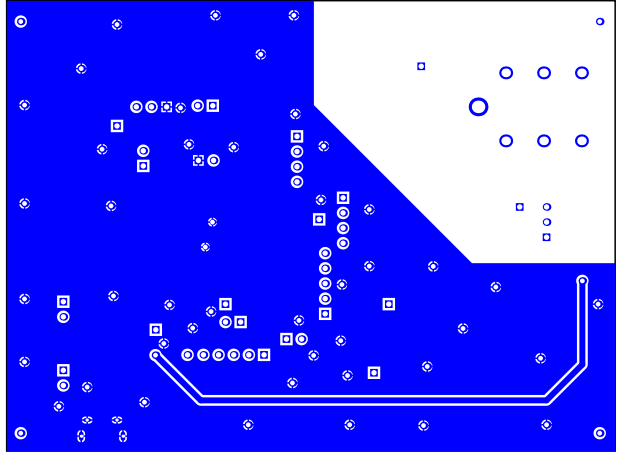
Total thickness: 1.69mm

Drill Table

Symbol	Count	Hole Size	Plated	Hole Tolerance
⊕	2	0.50mm	Plated	None
⊗	2	0.55mm	Plated	None
◇	51	0.80mm	Plated	None
□	47	0.90mm	Plated	None
◇	6	1.45mm	Plated	None
○	1	2.10mm	Plated	None
	109 Total			



Bottom Layer (Scale 0.7889)



Drill Drawing View (Scale 1:1)

